

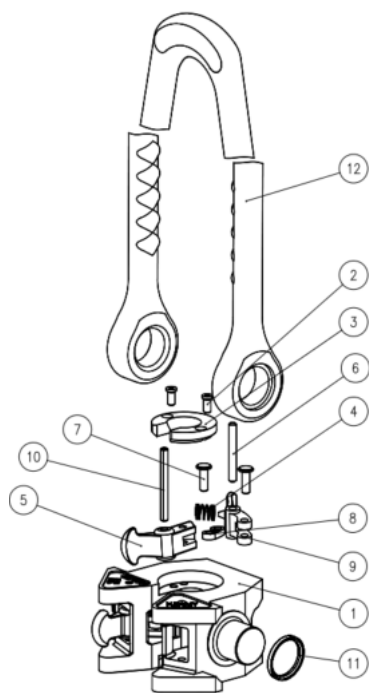
# SRE 抽油杆吊卡使用说明书

## USAGE DIRECTION FOR TYPE SRE SUCKER ROD ELEVATOR

### 1、 Introduction

SRE series sucker rod elevator is composed of elevator body and rod plates, which allow quick conversion of the elevator body to various rod or pipe size. Additional saving is realized because work plates can be replaced instead of replacing the entire elevator. The basic elevator design provides excellent balance and non-tilt performance. Large access to the front and rear release levers assures easy, safe latching and unlatching. They are designed and manufactured according to API Spec 8C—specification for drilling and production Hoisting Equipment.

Sucker Rod Elevator SRE25



SRE25 零件一览表 Part List

序号 No.	零件编号 Part No.		名称 Description	数量 Num.
	5/8-1	1.1/8-1.1/2		
1	011601017		5/8-1 吊卡体 Elevator Body	各 1
		011601036	1.1/8-1.1/4 吊卡体 Elevator Body	
		011601037	1.1/2 吊卡体 Elevator Body	
2	011601013	011601013	沉头螺钉 Screw	4
3	011601018		5/8-3/4 垫圈 Plate *	各 2
	011601019		3/4-7/8 垫圈 Plate	
	011601020		7/8-1 垫圈 Plate	
		011601029	1-1.1/8 垫圈 Plate	
		011601030	1.1/4 垫圈 Plate	
		011601031	1.1/2 垫圈 Plate	
4	130302037	130302037	压缩弹簧 Spring *	2
5	011601025	011601025	前舌 Front Latch *	2
6	011601022	011601022	定位销 Rivet, Lever	2
7	011601023	011601023	连接销 Link Pin	4
8	011601024	011601032	连接环 Link	2
9	011601021	011601021	后舌 Rear Latch *	2
10	130305176	130305176	弹性圆柱销 Pin, Drive, Latch	2
11	011601026	011601026	焊接挡圈 Retaining Ring *	2
12	011601027	011601027	提环 Bail *	1

\* 易损件 wearing part

## 2. TECHNICAL PARAMETERS

抽油杆规格 Rod size (in)	吊卡孔径 Dia of Bore (mm)	最大载荷 Max load (tons)	重量 Weight (kg)
$1/2 \sim 5/8$	19	20	12
$5/8 \sim 3/4$	23		
$3/4 \sim 7/8$	26		
$7/8 \sim 1$	30		
$1 \sim 1 1/8$	32		
$1 1/4$	35		
$1 1/2$	41		
$5/8 \sim 3/4$	23	25 30	17
$3/4 \sim 7/8$	26		
$7/8 \sim 1$	30		

## 3. CAUTION

- 1、 Elevators are cast alloy heat treated steel and should not be welded in the field
- 2、 Check the levers for full engagement when closed around the pipe
- 3、 The elevator can be maintained and inspected in accordance with API RP 8B “The recommended process of the inspection and maintenance of the elevator”.
- 4、 Overload is strictly forbidden. The elevator should be operated at not less than  $-20^{\circ}\text{C}$
- 5、 Elevators are manufactured to operate in a vertical direction and should never be used for laying down or picking up pipe.
- 6、 Be sure that the elevator's bore coincides with the type rod , you are lifting and that there is a proper fit between the two.
- 7、 Inspect the interchangeable rod splats regularly for wear
- 8、 The elevator body or bails from one elevator should never be changed with a elevator body or bails from another elevator.

#### **4、 TRANSPORTATION AND STORAGE**

1、 Crash is forbidden when in transportation of the elevator. It must be prevented

from rain.

2、 The products must be stored in the dry and well-ventilated place and prevented from in the sun or in the rain. It is forbidden to let the products contact acids, alkalis、 salts and some other corrosion substance.